



**TOGETHER,
WE RISE**

ODE Integrated Guidance Plan for Six ODE Initiatives

Annual Report for 2023-2024

November 19, 2024



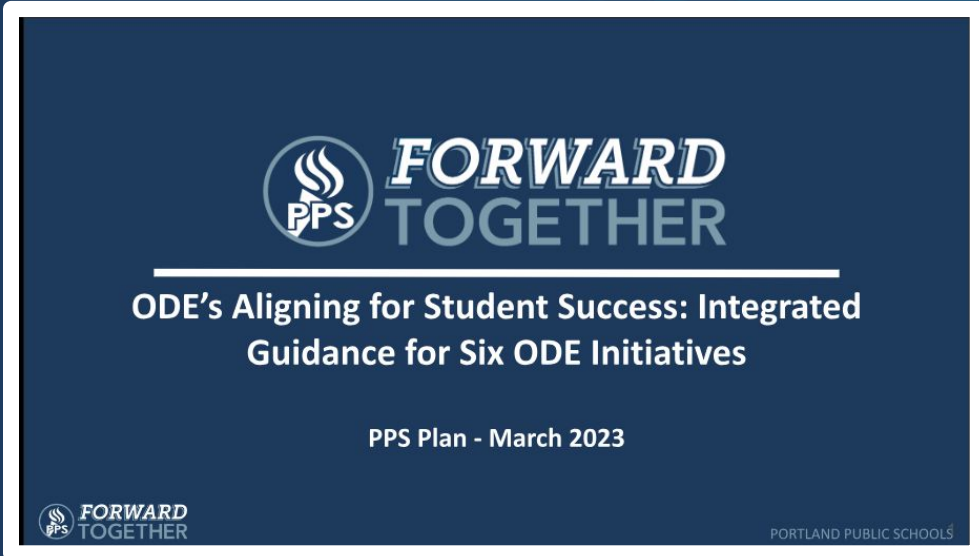
**TOGETHER ,
WE RISE**

Content

- Overview of ODE's Integrated Guidance and Grants
- Key Investments
- Annual Report Narrative



2023-2025 PPS Integrate Grant Plan



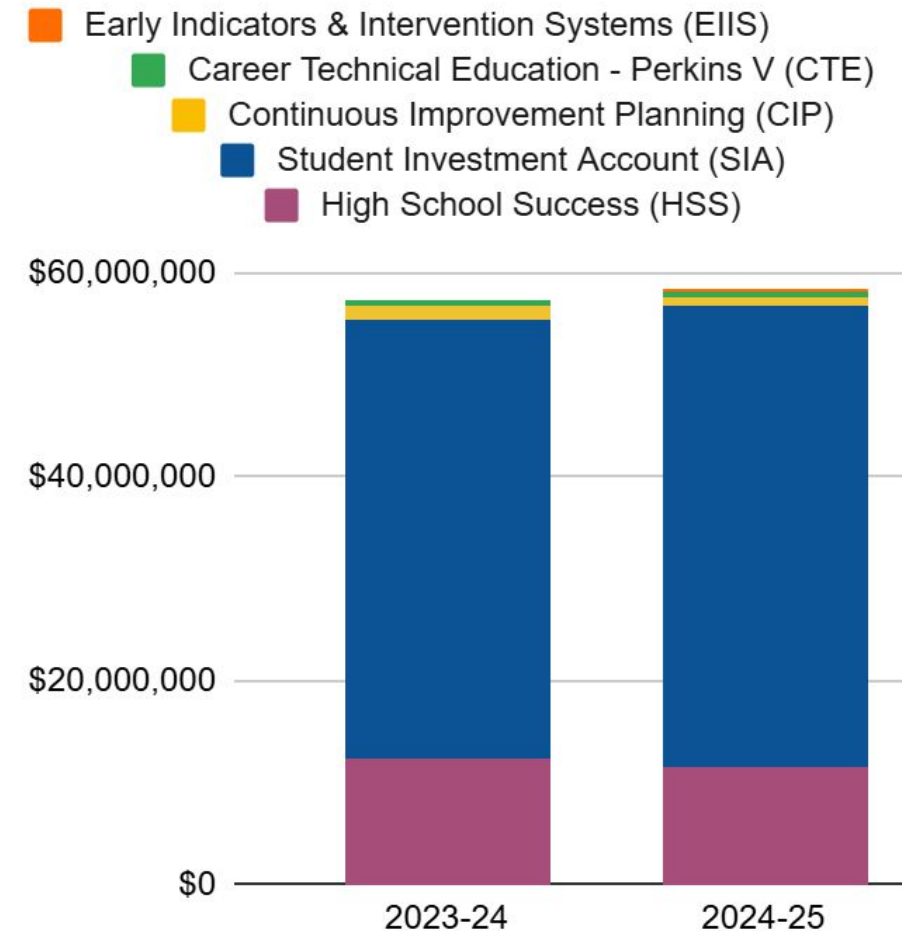
<https://www.pps.net/Page/20662>

- ODE integrated six programs focused on improving outcomes and learning conditions into a common framework
- The Board approved PPS Integrated Plan in March 2023
- Part of the Special Revenue Funds
- Restricted grant dollars
- \$57.4M in state and federal funds in 2023-24 and \$58.4M in 2024-25 (\$115.8M for the biennium)


ODE Allocation by Program

Program	2023-24	2024-25
High School Success (HSS/Measure 98)	\$12,264,031	\$11,531,951
Student Investment Account (SIA)	\$43,052,703	\$45,309,123
Continuous Improvement Planning (CIP/ESSA)	\$1,507,230	\$928,884
Career Technical Education - Perkins V (CTE)	\$471,245	\$470,328
Every Day Matters (EDM)*	\$0*	\$0*
Early Indicators & Intervention Systems (EIS)	\$129,685	\$125,172
Total Allocation	\$57,424,894	\$58,365,459

* EDM is unfunded and requirements are embedded in the five other grant programs.



PPS Integrated Plan Key Investments Priorities

- **Improved classroom experience**
 - Stronger **multi-tiered systems of supports**, including wrap-around emotional, mental, and behavioral health services
 - **Racial equity and social justice (RESJ) partnerships** with local nonprofit organizations to support Students of Color
 - **Restorative justice advocates** to strengthen community and repair harm to reorient discipline
 - **Professional learning** to implement new **core curriculum and instructional framework**
 - **Personalized learning**, with differentiated and flexible experiences
 - **Career-related programming** to emphasize real-world, hands-on learning
 - **Data-driven continuous improvement**
- 

2023-24 ODE Annual Report Narrative

Question 1: How do you see your progress contributing to the Outcomes and Strategies in your plan and your Longitudinal Performance Growth Targets (LPGT)? Discuss at least one Outcome where you have seen progress in implementation.

3+ Years of Steady Growth in ELA and Math

- Improvements in academic achievement with students with disabilities
- Black and Latina/o/x students in 3rd-grade reading and 5th-grade math

Improvements demonstrate:

- Resilient students
- Dedicated educators creating robust learning environments
- A commitment to educator training and support
- Key investments in targeted support for students
- Focus on student physical and emotional safety and wellbeing

ODE Annual Report Narrative Response

Question 2A. Discuss at least one Outcome where you have seen **challenges or barriers to implementation**.

PPS still faces a crisis

- **Must accelerate learning** for focal students
 - **All students can succeed** and we must do better
 - Persistent gaps in student outcomes need **sustained rigorous work and targeted action**
-

Question 2B. Where have you experienced barriers, challenges, or impediments to progress toward your **Outcomes and Strategies in your plan that you could use support with?**

A \$40M deficit, following a \$30M budget reduction

- Rising workforce costs; expired ESSER funds
- Retooling budget process for deeper analysis and stronger community engagement
- Targeting resources for students who need them most

Additional state support in 2025-2027 biennium would help sustain:

- Educator PD and PPS Instructional Framework
- Literacy enhancement
- MTSS interventions
- Supports for student and family well-being

ODE LPGT Requirements vs PPS Board Goals

Assurance that LPGTs were reviewed

PPS Board Goals For Our Students

- Rigorous targets set with Board direction
- Focus efforts for success on student racial groups most in need of academic acceleration to close predictable and persistent gaps
- Aligned with PPS Strategic Plan

ODE Required Longitudinal Performance Growth Targets (LPGTs)*

- Required by the Student Success Act
- Implemented in 2023-2024
- Co-developed with ODE
- Focuses efforts on a super-group of students (“combined focal”)
- Part of a statewide standardized evaluation framework

* PPS reviewed progress towards the LPGTs as part of our process for reviewing the Board Goals. Information was presented to the Board on November 6, 2024.

PPS Annual Report for ODE's Integrated Guidance

ODE Integrated Guidance Annual Report Approval Requirements

- ✓ Posted on the PPS website
- ✓ Presented at an open meeting with an opportunity for public comment
- ✓ PPS reviewed progress towards meeting the LPGTs

Key annual report links:

- [Annual Report on PPS Website](#)
- [Annual Report Narrative Response](#)

Thank you!



Contact us



PPS.NET



pubinfo@pps.net



(503) 916-2000



501 N Dixon, Portland, OR 97227



PORTLAND
Public Schools